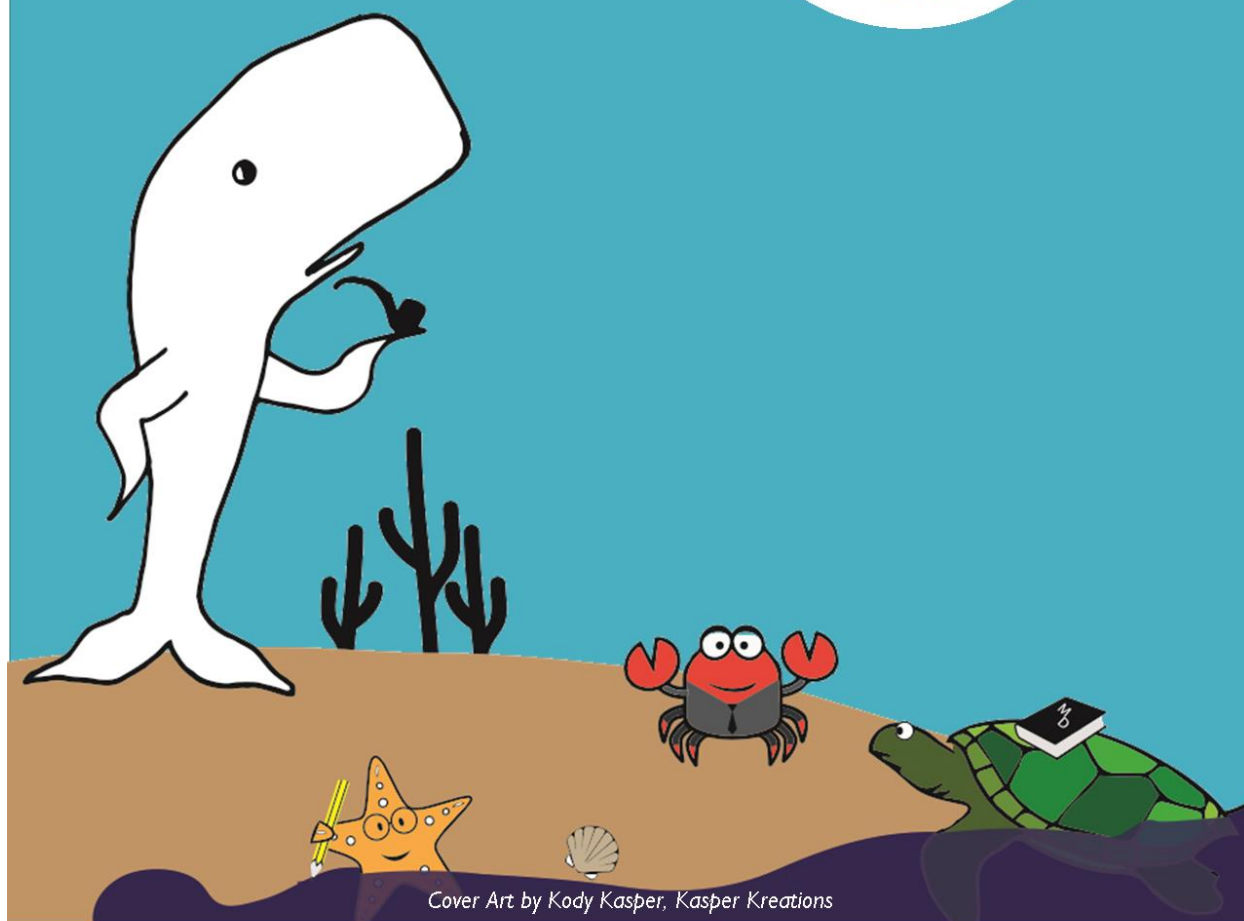


# Transgressions:

Performance, Practice & Code



Cover Art by Kody Kasper, Kasper Kreations

## **General Schedule**

### **Friday**

<i>Opening Remarks and Shared Reading Symposium</i>	ILC 119	1:30-2:00
<i>Session 1</i>		2:15-3:15
Ethics of Bodies	ML 210	
Political Space of Marginalized Communities	ILC 119	
<i>Session 2</i>		3:30-4:30
Sex/Gender in (Post)Modernism	ILC 141	
(Im)Proper Victorians	ILC 137	
<i>Keynote—Dr. Nancy Koppelman</i>	ML 311	5:00-6:00
<i>Social Hour—La Cocina, Downtown Tucson</i>		6:30

### **Saturday**

<i>Keynote—Dr. David Hawkes</i>	ML 311	9:30-10:30
<i>Session 3</i>		11:00-12:00
Sexualities and Identities	ILC 141	
Challenging Linguistic Imperialism: Pre-Service Peace Corps Training to Teaching	ILC 137	
<i>Lunch Break</i>		12:00-1:30
<i>Session 4</i>		1:45-2:45
Questions of Theology	ILC 137	
Blurred Boundaries of Genres and Subjectivities	ILC 141	
<i>Session 5</i>		3:00-4:00
Modern (Dis)Embodiment	ILC 137	
The Power of Solidarity: Finding Creative Ways to Fight for Justice for Immigrants	ILC 119	
<i>Iced Coffee Table</i>		
<i>Session 6</i>		4:15-5:15
(Performances of) Gender in Shakespeare	ILC 119	
Empathy and Power in Pedagogy	ILC 137	
<i>Closing Remarks</i>	ML 311	5:30-6:00
<i>Reception—Dinner and Drinks at the Pink Hotel, on Campus</i>		6:30-8:00

**Program of Panels and Papers**

Friday, April 21

Opening Remarks and Shared Reading Symposium 1:30-2:00 **ILC 119**

Session 1 2:15-3:15

**Ethics of Bodies**

**ML 210**

I have a strong center but the tender cannot hold

Katelyn Peters; The Evergreen State College

“Flesh of My Flesh”: Consanguinity and Post-Soviet Transgression in Lyudmila Petrushevskaya’s *The Time Night*

Rachel Sims; University of Arizona

Sympataphysics: A Sophistic Ethic of Perpetual Resistance and Transgression

Christopher Christiansen; University of Arizona

**Political Space of Marginalized Communities**

**ILC 119**

The Myth of Mediocrity

Chris Corces-Zimmerman; University of Arizona

“¡Berta Vive! ¡Todos Somos Berta!”: Transnational Haunting Potentials of Public Demonstrations and Makeshift Memorials Created for Honduran Activist Berta Cáceres

Joanna E. Sanchez-Avila; University of Arizona

Cultural Studies in a Dystopian World?: Markers of Cultural Hegemony in Bacigalupi’s *Ship Breaker*

Sarah J. Wilhoit; University of Arizona

Session 2 3:30-4:30

**Sex/Gender in (Post)Modernism**

**ILC 119**

Symbolic Language and Gender in Shirley Jackson’s *We Have Always Lived in the Castle*

Kayla Chronister; University of Arizona

On/ Off the Page: Gendered Visual Targets and Violence

Maria Merritt; California State University, Fullerton

**(Im)Proper Victorians**

**ILC 137**

"Amelia's Piano: Thing Theory, Simulation, Victorian Pianos, and Sentimental Value in Thackeray's *Vanity Fair* (1848)

Justin Rogers; New Mexico Highlands University

The Burden of Words: Swinburne’s Repetition with Variation in “The Leper”

Ruixue Zhang; University of Arizona

Drunk *Jane Eyre*

Jayda Coons, Daniel Kasper, and Emily Lyons; University of Arizona

Friday, April 21

Keynote—Dr. Nancy Koppelman 5:00-6:00 **ML 311**

“Performing Mastery: The Significance of the American Velocipede, 1868-1869”

Social Hour 6:30 **La Cocina,**  
**201 N Court Ave,**  
**Tucson, AZ 85701**  
**Come get some appetizers on us!**

Saturday, April 22

Keynote—Dr. David Hawkes 9:30-10:30 **ML 311**

“Shakespeare, T. S. Eliot and Financial Derivatives”

Session 3 11:00-12:00

**Sexualities and Identities****ILC 141**

My Pronouns Are...: On the Radical Performance of Non-Binary Pronouns  
 JP Anne Giera; Pratt Institute

Secluded Publics: Queer Space in the Palestinian Hip-Hop Scene  
 Alex Karaman; University of Arizona

“Naked Angels”: Subversive Politics of Transgressive Sexuality in Allen Ginsberg’s “Howl”  
 Seoyoung Park; University of Arizona

**Challenging Linguistic Imperialism:****Pre-Service Peace Corps Training to Teaching****ILC 137**

The Toughest Job You’ll Ever Critique: An Inside Evaluation of Linguistic Imperialism in  
 the Peace Corps

Lauren Harvey & Emily Palese; University of Arizona

Lunch Break 12:00-1:30

Saturday, April 22Session 4

1:45-2:45

**Questions of Theology****ILC 137**

Transgressive Religious Conspiracy in Guillaume Apollinaire's *Saint Adorata*  
Andrew Rhoades; University of Arizona

The Blood of the Dragon: Reflexes of Corruption and Diabology in *das Nibelungenlied*  
Hayden Eric Godfrey; University of Arizona

Prolegomena to a Botanical Project in Theological Ethics  
Timothy Terhaar; Independent Scholar

**Blurred Boundaries of Genres and Subjectivities****ILC 141**

I Carry You with Me: On Representation and the Bodily Event  
Chelsea Couch; University of Oregon

Horrific Fantasies: Sarak Sitkin's *Trifling Matters* and the Crisis of the Modern Subject  
Mel Ferrara; University of Arizona

Between Innovation & Tradition: Multivariant Narrative and Its Transgressive Practices  
Violet Chabko; University of Arizona

Session 5

3:00-4:00

**Modern (Dis)Embodiment****ILC 137**

Shifting from the Eye to the Ear: the Disappearance of Stenographers and the Coming of  
China's Modernization, 1890s

Dongchen Hou; University of Arizona

Arranging Ithaca in James Joyce's *Ulysses*

Tim Salzer; University of Arizona

Phantom Clowns, Moral Panic, and the Law

Nicholas Mignanelli; University of Arizona

**The Power of Solidarity:****Finding Creative Ways to Fight for Justice for Immigrants****ILC 119**

Family Separation through Deportation: Performing Resistance and Solidarity in Arizona  
Sophie S. Alves; University of Arizona

Intersections of Gender, Race, and Violence in the Context of Contemporary U.S.  
Anahí Aridai Herrera; University of Arizona

Refugees and the Violation of Human Rights: the Importance of Counter Discourses to  
Resist the Dominant Narrative

Aurora Sartori; University of Arizona

Iced Coffee Table

Saturday, April 22

Session 6

4:15-5:15

**(Performances of) Gender in Shakespeare**

**ILC 119**

Performing a Constructed Social Identity

Garrett Besonson; Slippery Rock University

“The Obtaining of Portia by the Choice of Three Chests”: Kinship Systems in Shakespeare’s *The Merchant of Venice*

Catherine Fakler; University of Arizona

**Empathy and Power in Pedagogy**

**ILC 137**

Fighting and Embracing Emotion in the Classroom

Amy Takabori; University of Arizona

Empathetic Teachers, Effective Composition Instruction

Kristen Hoggatt-Abader; University of Arizona

Advocating for Literacy Alternatives: Collaborations inside the Wire

Sally F. Benson; University of Arizona

Closing Remarks

5:30-6:00

**ML 311**

Reception—Dinner and Drinks

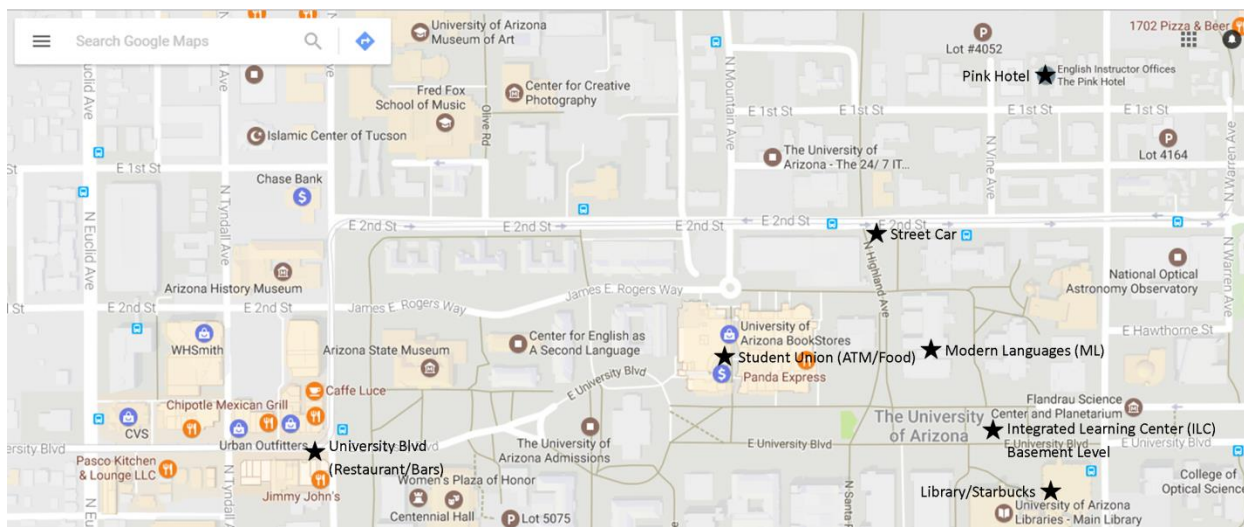
6:30-8:00

**Pink Hotel**  
1515 E. 1st St  
Tucson, AZ 85719

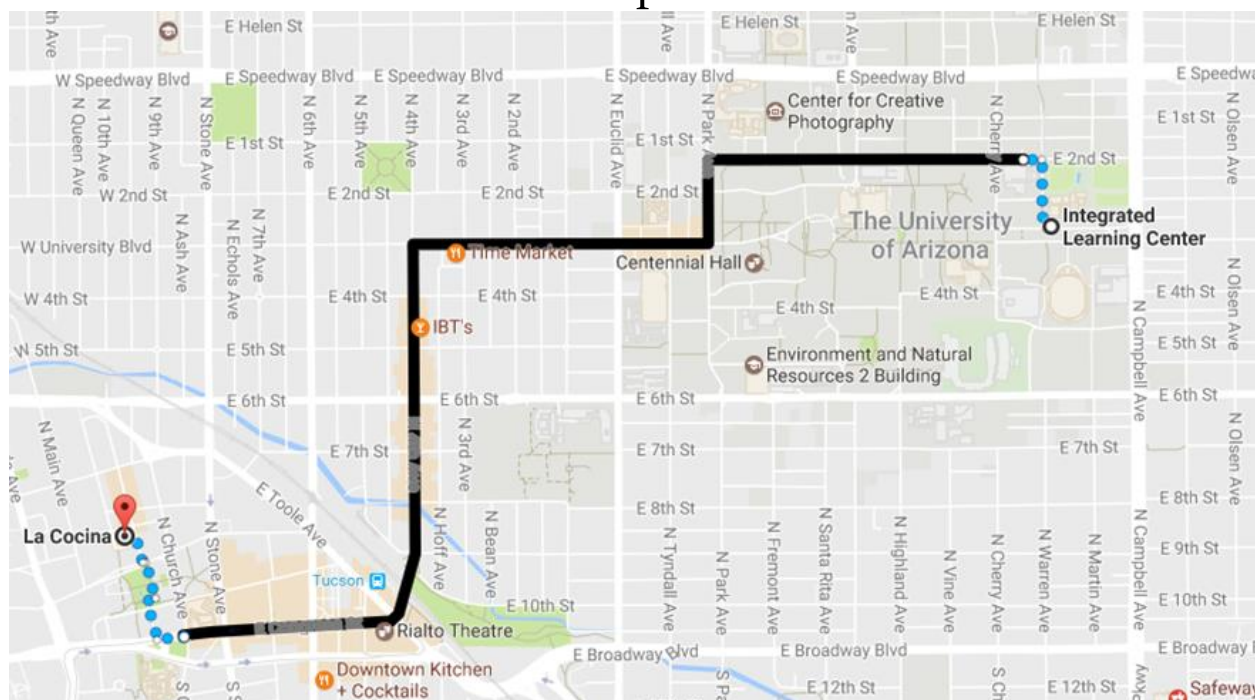
**A Lyrical Response to Recent Events**

Written and Performed by Emily Thomas & the ABDs

# Campus Map



# La Cocina Map—Street Car



Google Maps Integrated Learning Center to La Cocina 2:14 PM - 2:42 PM (28 min)

2:14 PM **Integrated Learning Center**  
 The University of Arizona, 1713 E University Blvd, Tucson, AZ 85719

**Walk**  
 About 4 min, 0.2 mi  
 Use caution - may involve errors or sections not suited for walking

↑ Head west on E University Blvd 49 ft

↘ Turn right onto N Warren Ave 0.1 mi

↙ Turn left onto E 2nd St 174 ft  
 Destination will be on the right

2:18 PM **SL/2nd St/Cherry Av**  
 700 Av Del Convento  
 20 min (10 stops) - Stop ID: 2SCH(CR)  
 Service run by SunTran - Route information

2:38 PM **SL/Congress/Church**  
**Walk**  
 About 4 min, 0.2 mi  
 Use caution - may involve errors or sections not suited for walking

↑ Head west on W Congress St 56 ft

↘ Turn right toward W Alameda St 449 ft  
 Take the stairs

↙ Turn left toward W Alameda St 338 ft

↙ Turn left onto W Alameda St 30 ft

↘ Turn right onto N Court Ave 279 ft  
 Destination will be on the left

2:42 PM **La Cocina**  
 201 N Court Ave, Tucson, AZ 85701

**Tickets and information**  
 SunTran - 1 (520) 792-9222

These directions are for planning purposes only. You may find that construction projects, traffic, weather, or other events may cause conditions to differ from the map results, and you should plan your route accordingly. You must obey all signs or notices regarding your route.



Thanks to All of Our Sponsors!



 THE UNIVERSITY OF ARIZONA  
Graduate College  
Office of the Dean

 College of Social  
& Behavioral Sciences

 **confluentcenter**  
for Creative Inquiry

arizona quarterly  
*a journal of*

American Literature, Culture, & Theory

 COLLEGE OF SOCIAL  
& BEHAVIORAL SCIENCES  
English